

SonoAVC*general*

What is it?

- 3D automated imaging tool to detect and measure hypoechoic structures in a single volume
- Volume & mean diameter are calculated

Why use it?

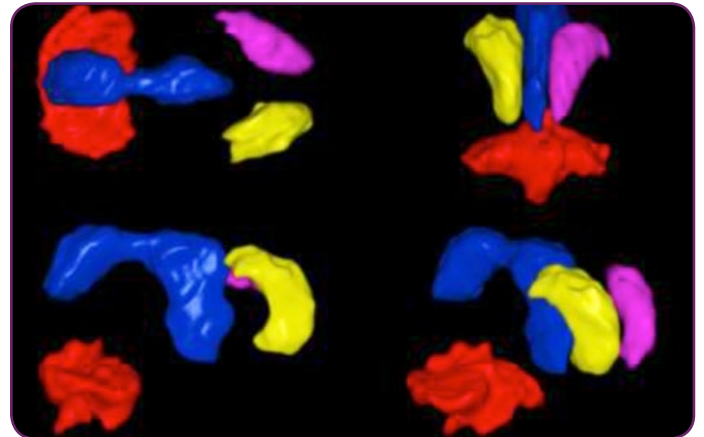
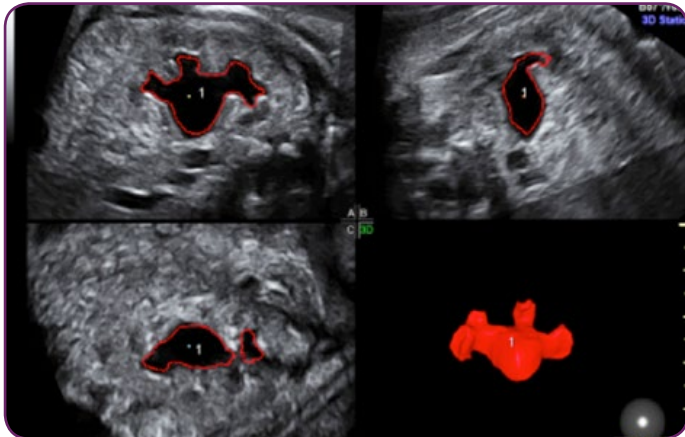
- Can be used for any hypoechoic structure
- Exam types – cerebral ventricles, kidneys, bladder, stomach

How to use it?

- Select Volume Analysis on touch panel, then select SonoAVC*general*
- Keep ROI large – it is not necessary to cone ROI down as in SonoAVC*follicle*
- Use trackball + set keys to Add/Remove anechoic structures
- Use with GA 17-23 weeks

Tips

- SonoAVC*general* added AFTER you click on a structure (unlike SonoAVC*follicle*), therefore you do not need to decrease ROI around the structure



imagination at work

© 2013 General Electric Company – All rights reserved.
* Trademark of General Electric Company.

October 2013
DOC1450295