



# Voluson™ Uterine Trace

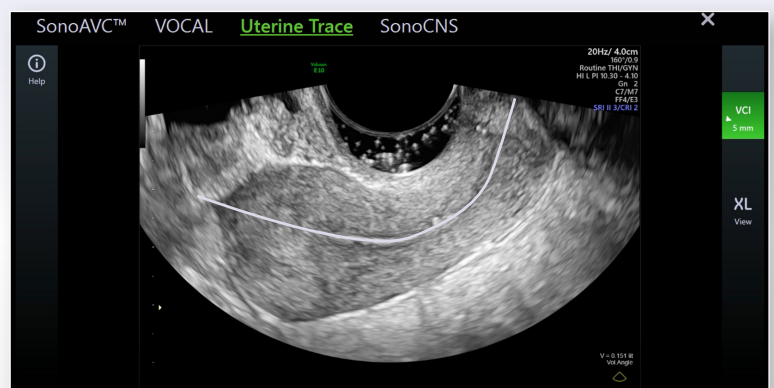
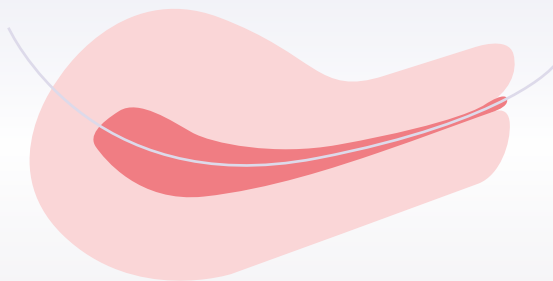
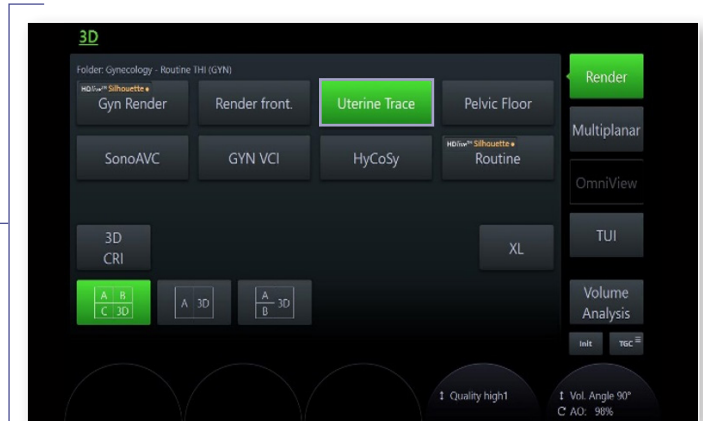
Taking the effort out of 3D with quick and easy access to the coronal plane of the uterus, a plane not accessible by 2D Imaging

## Technique

- Optimize 2D image\*
- Select **3D button**
- Select **Uterine Trace** preset
- Adjust **Volume Angle** to include the entire uterus, up to 120°
- Select desired **Quality** (max=best resolution, longer acquisition time)
- Trace endometrium on touch panel
- Confirm right/left laterality of C-Plane with 2D imaging



\*Tips can be found on 2D Optimization Quick Card

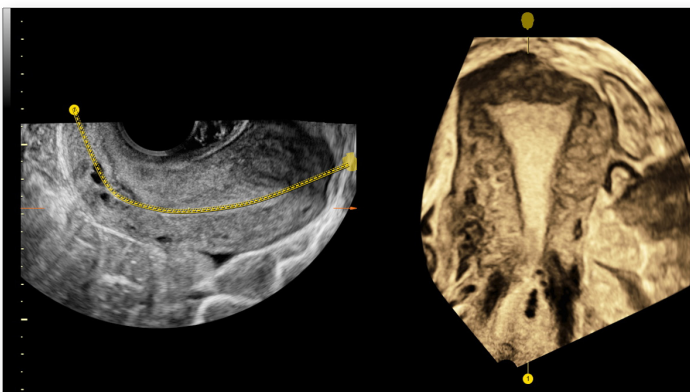
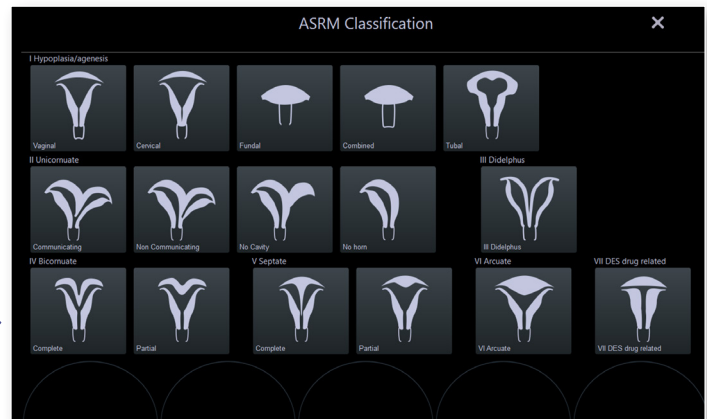
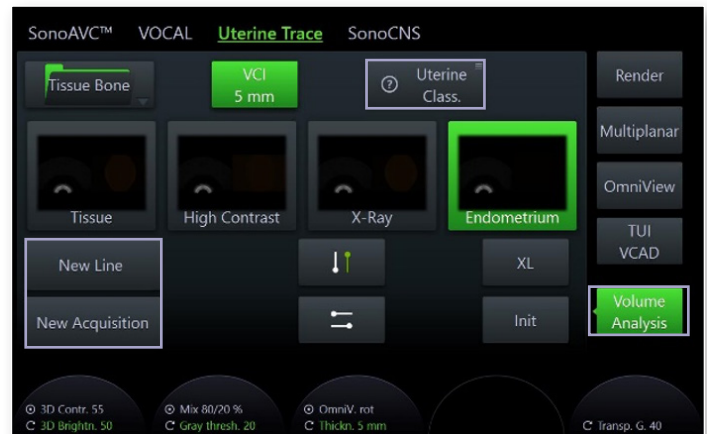
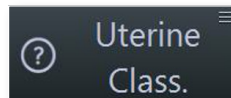


Select 3D ➤ Select Uterine Trace ➤ Trace endometrium on the touch panel

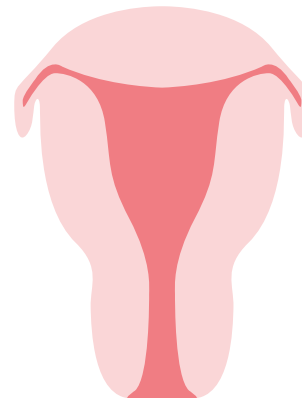
# Voluson Uterine Trace

## Tips

- Include entire uterus and cervix in **2D sagittal** image
- 3D sweep starts automatically when endometrium trace is completed
- Watch as volume is being acquired to be assured entire uterus is included in the volume, **Volume Angle** may need to be adjusted
- Adjust position and rotation of line as needed
- **VCI** (Volume Contrast Imaging) is added according to selected preset for additional contrast resolution, thickness may be adjusted
- To ensure complete visualization of cornua bilaterally, consider aligning endometrium in **B-Plane** in **Multiplanar** view
- Select **Uterine Classification**
- Select uterine cavity icon based on ESHRE or ASRM classification guidelines



Retroverted Uterus with VCI



Coronal Plane of the Uterus



© GE, 2021

GE Healthcare reserves the right to make changes in specifications and features shown herein, or discontinue the product described at any time without notice or obligation. Contact your GE Healthcare representative for the most current information. GE, the GE Monogram and Voluson are trademarks of GE. GE Healthcare, a division of GE. GE Medical Systems, Inc., doing business as GE Healthcare.

April 2021  
JB03464XX