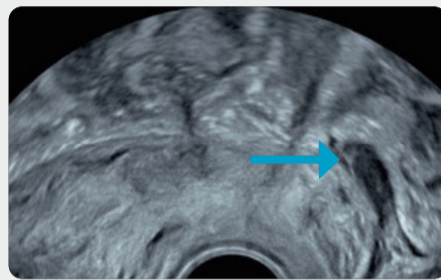
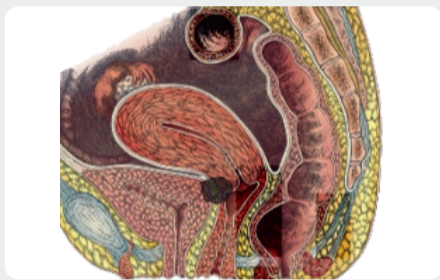


Ultrasound assessment of deep infiltrating endometriosis

- Dr Jean-Marc Levallant, AMP – CHI Créteil – France
- Dr Perrine Capmas, Kremlin-Bicêtre Hospital – France
- Dr Thibaud Vernet, CHI Créteil – France

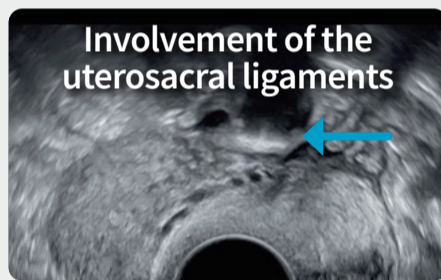
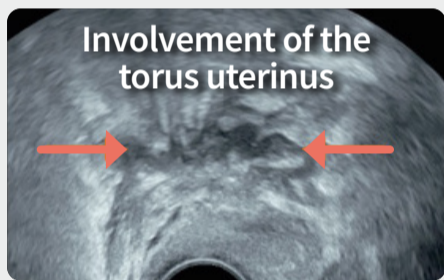
- Edwige Hurteloup, AMP – CHI Créteil – France
- Grégoire Potelle, Voluson France

Previous condition



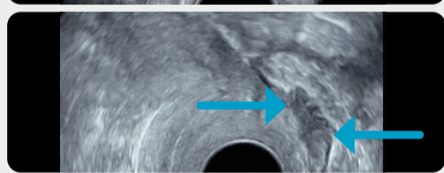
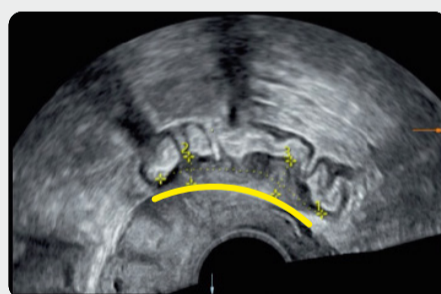
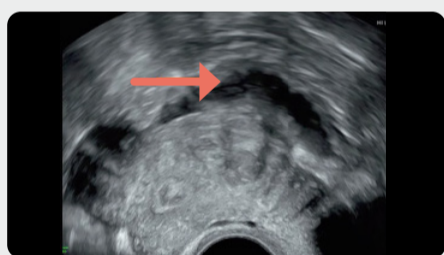
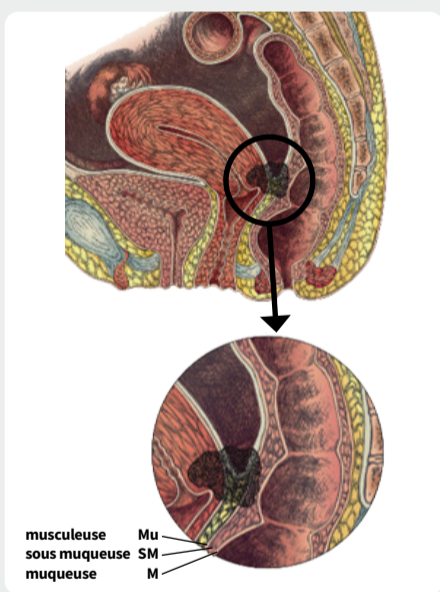
- Anterior nodule with mass effect on the posterior surface of the bladder
- Infiltration of the vaginal fornix

Posterior involvement – torus and uterosacral ligaments



- Endometriosis of the torus uterinus on axial view
- Thickened and hyperechoic uterosacral ligament

Gastrointestinal involvement



- Endometriosis of the upper rectum – involvement of the muscularis layer without involvement of the mucosa
- Rectal endometriosis on sagittal view
- Sigmoid nodule sparing the mucosa on axial view
- Lesion biometrics – Length, depth, and percentage of the circumference involved

Ovarian involvement



- Endometrioma and follicular reserve
- Kissing ovaries
- Thick-walled hydrosalpinx and endometrioma



Discover more
on Voluson™ Club