

Fertiliscan[®]

Performed on days 6-8

- Edwige Hurteloup, AMP – CHI Créteil, France
- Grégoire Potelle, Voluson France
- Dr. Jean-Marc Levallant, AMP – CHI Créteil, France
- Prof. Nathalie Massin, AMP – CHI Créteil, France

An ultrasound examination performed between the 6th and 8th day of the cycle to study the three essential functions of reproduction. This examination is also useful in detecting endometriosis. This is a first-line examination that provides a thorough evaluation in an infertility assessment.* It is well tolerated and avoids the need of multiple exams.

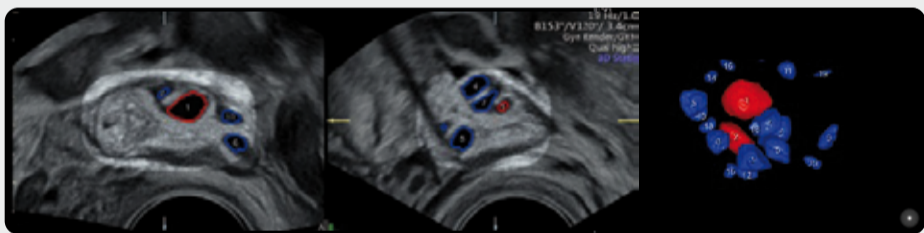
Ovarian Function

1. Evaluation of Ovarian Reserve:

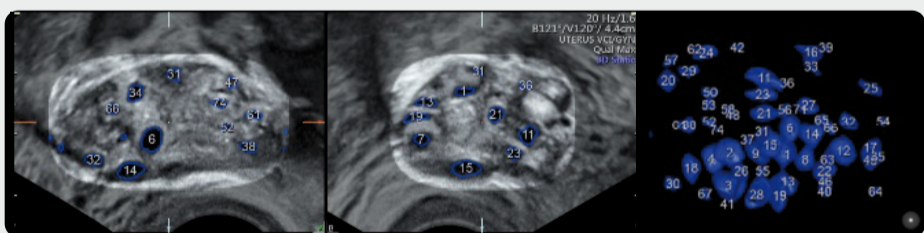
Count of all follicles between 2 and 10 mm (antral follicles = AFC) given for each ovary. To be interpreted according to age.

2. Evaluation of Follicular Growth:

On days 6-8, a selected follicle stands out from the rest of the cohort and measures between 9 and 12 mm.



Normal Situation: AFC 10 to 20 per ovary according to age, with a selected follicle between 9 and 12 mm.



Multifollicular Ovaries: AFC > 19 on at least one ovary, generally no follicle > 10 mm.



Decreased Reserve: AFC < 5-10 in total with often a follicle of 12 to 14 mm (short cycle) or several selected follicles > 10 mm.

Uterine Function

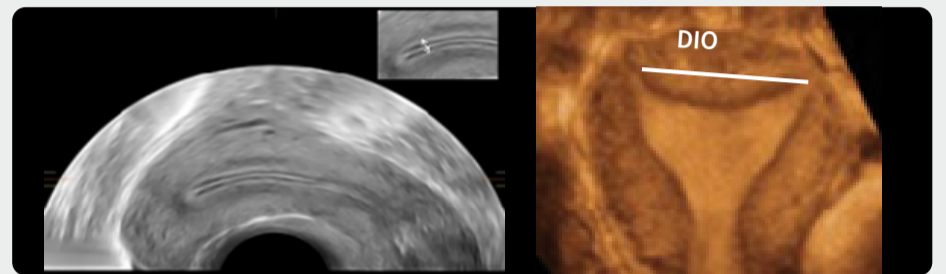
3. Functional Evaluation

Thickness and appearance of the endometrium.

On days 6-8, the endometrium appears proliferative (triple band appearance) measuring between 5 and 7 mm, reflecting hormonal production (estradiol and progesterone).

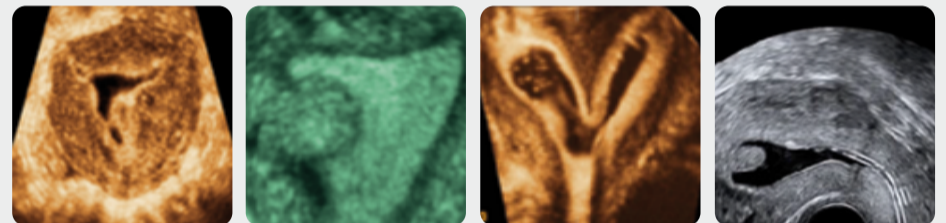
4. Anatomical Evaluation

The structure of the myometrium is evaluated for fibroids or adenomyosis, characterization, and impact on the cavity. 3D frontal reconstruction assesses the shape of the uterus and cavity; the measurement of the interstitial distance (IOD) evaluates the size of the cavity.



5. Hysterosonography Indication

If there is an anomaly of the cavity line or lack of clear contrast.



Uterine adhesions

Type 1 fibroid

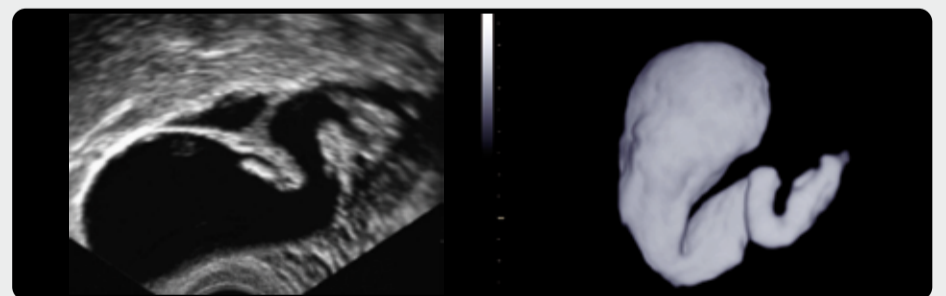
Uterine septum

Polyp

Tubal Function

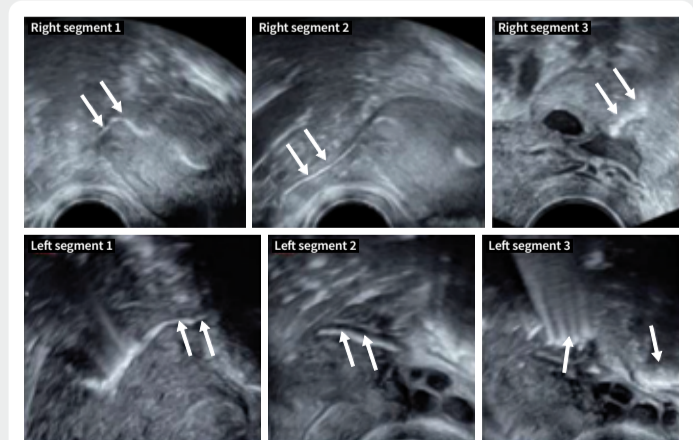
6. Anatomical Tubal Evaluation

Search for hydrosalpinx with 3D reconstruction.



7. Functional Tubal Evaluation HyFoSy**

Intrauterine injection of a hyper-echoic foam and visualization of tubal and intra-peritoneal passage.***



Discover more
on Voluson Club

* After 1 year without conception before 35 years, after 6 months after 35 years.

** Hysterosalpingo-Foam Sonography en l'absence d'anomalie évidente

*** Classification d'après Levallant et al. 2022